



LETS MAKE A Sarcophagus

Messiness	☀️ ☀️ ☀️ ☀️ ☀️ ☀️ ☀️ ☀️ ☀️ ☀️
Cost	💰 💰 💰 💰 💰 💰 💰 💰 💰 💰
Time	🕒 🕒 🕒 🕒 🕒 🕒 🕒 🕒 🕒 🕒
Difficulty	★ ★ ★ ★ ★ ★ ★ ★ ★ ★



YOU WILL NEED:

- A doll, including the packaging (Check your local dollar store or Wal-Mart for inexpensive options. Make sure your doll has an inner sleeve. Alternatively, an old doll whose owner has given you permission to use it and a Q-tip box can work.)
- Masking or painter's tape
- Newspaper
- Cardboard or thick card stock paper
- Scissors
- Glue
- Water
- Paper towel
- A container with a lid (An old food container will work. It will be used to mix and store your paper mache mixture in.)
- White paint to be used as primer.
- Gold or stone coloured paint (Depending on what look you want for your sarcophagus.)
- Paint brushes (For gluing and painting.)
- Something to protect your work
- Surface (A plastic table cloth or a bag.)

ADDITIONAL ITEMS TO DECORATE YOUR SARCOPHAGUS:

- paints, markers (Sharpies), coloured paper, etc. (Anything that could help you decorate your sarcophagus).



ALWAYS READ THE INSTRUCTIONS ALL THE WAY THROUGH BEFORE YOU START.

1

Carefully unpack your doll from the packaging. Look out for twist ties and tabs that may be securing it.

**2**

Cut away the tabs on one end of the box.

You may want to also trim, any uneven bits on the inside sleeve if there are any.



Tape over holes, tabs and uneven bits of the sleeve that you weren't able to trim, or anything that seems flimsy, to make it easier to paper mache over. Undo the opposite end of your box and tape down the tab on the outside. This will allow your sleeve to move in and out of the finished sarcophagus without catching on this tab.



Cover the plastic areas of the packaging with your tape. Plastic doesn't paint well nor does paper mache stick to it. By covering the plastic areas with tape, we create a surface that you can paper mache over and then paint easily.

**3**

Now cover the box and sleeve with a single layer of paper mache and leave it to dry. This may take a day.

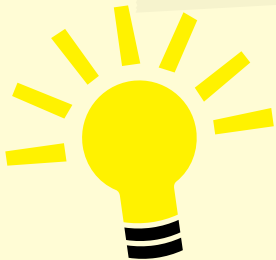
**2**

PAPER MACHE INSTRUCTIONS:

1. Cut your newspaper into small squares and strips. A variation of small pieces will make it easier to work with.
2. Mix your glue - 1 part glue 1 part water - in your container. You may want to experiment with the mixture if you think it is too runny or thick. By using a container with a lid you can save any unused glue mixture for later in the project or for others. Some people use a flour and water mixture for their paper mache but this can grow mouldy if not dried properly so it is not something we would recommend.
3. Dip newspaper strips into glue mix and apply to the item you are covering.
4. Allow each layer to dry before applying another.

4

Remove the clothes from your doll and cut off the hair, as it will be hard to paper mache over it. Once you have as much hair removed as possible, trim off the back of the head to help it lay flat onto the box. Caution: Take care when cutting the plastic doll. Then glue the doll to the box. Look to see where the doll meets the box to determine the best places to apply glue. Use the side of the packaging that was the back of the box. It is going to be stronger than the front, which would have been the plastic side and flimsier. Allow the glue to dry and for the doll to become secure.



TIP:

- If you want your sculpture to be holding a staff or appear to be praising the Gods, use a small elastic band to hold the hands together, or tape them in an upward position.

5

Give the doll a layer of paper mache and allow it to dry for a day.



3

6

Using cardboard, newspaper, paper towel, glue and tape you can add personality to your sarcophagus - add a headdress, beard or shape the head to look like one of the Egyptian gods . Anubis has a jackal (dog-like) head, Bastet has a cat head and Ra has a bird head. There are many more options – do some investigating. Once you have added your headdress or any other personal touches give the sculpture another layer of paper mache. This time use paper towel pieces instead of newsprint. It's better for details and gives a smoother finish. Let it dry.



7

Now give everything a coat of white paint. This acts as a primer, covering up the writing and pictures on the newsprint so they won't show through the gold or stone colour of your finished sarcophagus. Let dry.



8

Coat everything with your gold or stone-coloured paint, and let dry.



9

Once the gold/stone paint has dried, you are now ready to decorate your sarcophagus any way you want. You can use paint, markers, stick-on-gems, whatever you wish.





LETS MAKE A Mummy

YOU WILL NEED:

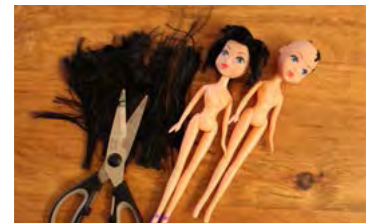
- A doll (If you have made a sarcophagus make sure it fits inside. Check your local dollar store or Wal-Mart for inexpensive options. Alternatively an old doll whose owner has given you permission to use it can work.)
- Gauze or/and white scrap material
- Glue
- Water
- A container with a lid
- (An old food container will work. It will be used to mix and store your paper mache mixture in.)
- Scissors
- A paint brush (For gluing.)
- Something to protect your work surface
- (A plastic table cloth or a bag.)



ALWAYS READ THE INSTRUCTIONS ALL THE WAY THROUGH BEFORE YOU START.

1

Remove the clothes and cut off the hair from your doll.



2

Cut the gauze or cloth into strips. Make them appropriate wrapping size for your doll.

Gauze can start to unravel so you need to take care. You don't need to use glue with gauze as it will stick to itself and stay in place but if you are planning on playing with your mummy, use the glue mixture and "gauze" mache it onto your doll, It will have a better chance of surviving any mummy mischief you may have planned for it.

If you are using cloth strips, then you will need to "cloth" mache them onto your doll. "Cloth" or "gauze" mache is just using cloth or gauze strips instead of paper with your glue mixture.

Let dry.

Once your mummy is dry place it in your sarcophagus' inner compartment.



THINGS TO DO WITH YOUR SARCOPHAGUS AND MUMMY!

1

Are you studying Egypt or Ancient Civilizations in school? This makes a great project – place your essay or notes inside with your mummy!



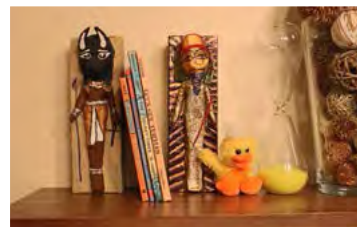
2

Having a Halloween, Egyptian or mummy themed party? Use Sarcophagi as the invitation.



3

Make two and place a bag of sand inside each for cool book ends.



4

Send an awesome letter to a friend. Create your own set of hieroglyphics and write a letter using them. Be sure to include a copy of what letter each picture represents so they can decipher your letter.



THAT'S IT! YOU'RE DONE.

Take a picture of your masterpiece and send it to **GALLERY@THATCRAFTGUY.com** so we can post it in our gallery! And don't forget to check out other great project ideas at **THATCRAFTGUY.com**!